



Kiwi Curved Shelter

The Kiwi Curved Shelter is styled to impress. With its slope, curve & screens to protect you from all elements, this large practical shelter will fit a whole families picnic or BBQ all in one.



Customisation
available

Quality & durability

- Colour steel roof
- Treated & sealed timber posts, beams & screens
- 5.6m x 4.0m
- Seat not included
- Supplied as core mount only

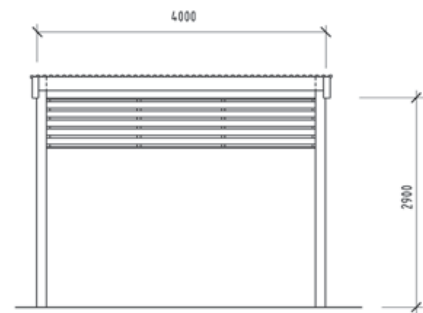
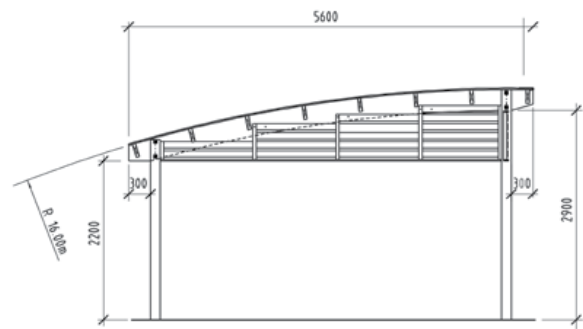
Ideal for

- Parks
- Education
- Holiday Camps
- Sporting Camps

Finishes available

- Kitset, flat packed
- Treated & sealed timber

Specifications



Net floor area: 17.7m²

- Shelters have been designed in conjunction with a Chartered Professional Engineer. Design parameters available upon request.
- PSI producer statements are available for a surcharge.
- Shelters with a net floor area 30m² and under do not require a building consent. However, UE recommend customers check with their council for region specific requirements.

Contact us today

Freephone **0508 4 URBAN** or visit urbaneffects.co.nz